

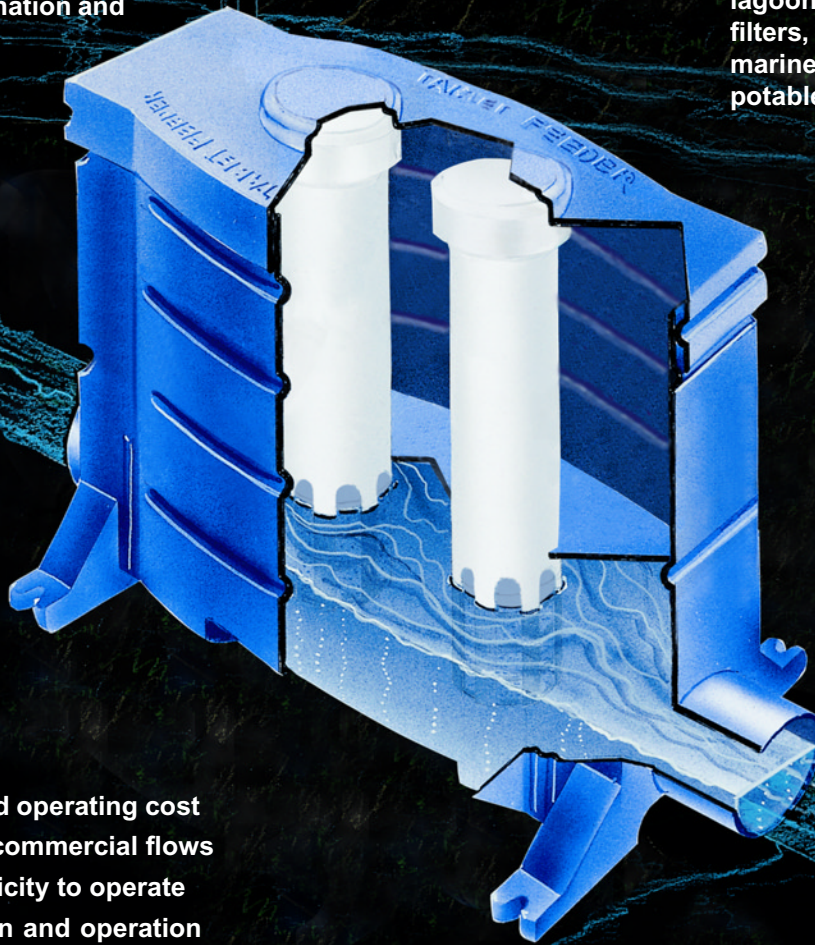
NORWECO
NORWALK WASTEWATER EQUIPMENT COMPANY

BIO-DYNAMIC®

MODEL LF 1500 DRY CHEMICAL TABLET FEEDER

Provides a consistent application rate for any 2 5/8" diameter chemical tablets, including chlorination, dechlorination and bacterial products

For use with septic systems, aerobic treatment systems, surface or subsurface sand filters, peat filters, mounds, lagoons, synthetic media filters, constructed wetlands, marine sanitation devices and potable water treatment



- Low initial cost and operating cost
- For residential or commercial flows
- Requires no electricity to operate
- Flexible installation and operation
- Treats flows up to 1,500 gallons per day
- 10 year limited warranty

BIO-DYNAMIC® MODEL LF 1500 TABLET FEEDER

GENERAL INFORMATION

The Bio-Dynamic Model LF 1500 tablet feeder is a completely self-contained dry chemical dosing system that will effectively treat water or wastewater flows up to 1,500 gallons per day. The LF 1500 includes molded inlet and outlet hubs for direct connection to standard Schedule 40 PVC piping. These hubs provide the LF 1500 with multiple installation options, including in-line, direct burial or contact chamber mounting. Separate 24" riser sections are available for direct connection to treatment system piping more than 18" below grade. Within the feeder, an internal safety/reinforcing strut prevents entry into the system and provides additional strength for direct burial installations. Any 2⁵/₈" diameter tablet can be used in the LF 1500 for completely automatic and unattended water or wastewater treatment. Two specially designed and manufactured one-piece chemical feed tubes are included with each LF 1500 to provide maximum durability and operational life for the system.

The LF 1500 is completely gravity fed and provides consistent chemical application without the use of electricity and with no moving parts. The chemical application rate of the system is automatically controlled by the tiered flow deck. As liquid enters the tablet feeder, it is directed by three separate tiers within the flow deck. Low flow rates are channeled directly to the chemical tablets to insure sufficient dosage. Intermediate flows are directed through the second tier, which creates a flume to regulate chemical consumption. Higher flows are channeled away from the feed tubes to prevent over application of chemical. The LF 1500 insures a consistent dosage even during low, sustained, variable, intermittent and surge flows that are typical of residential and small commercial treatment systems. Internal fall within the feeder insures that all liquid will completely drain from the system during periods of no flow.

ADVANTAGES

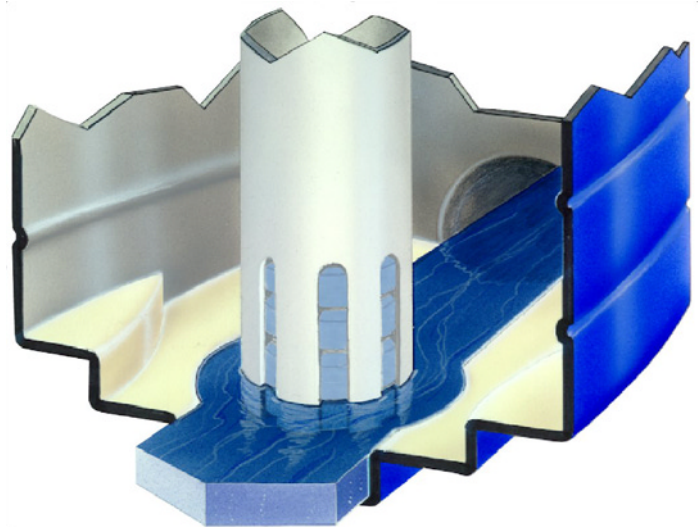
- Consistent chemical application to varying flow rates
- Quick and easy installation for any treatment system
- No moving parts or electricity required
- Inlet and outlet hubs allow direct piping connection
- One-piece feed tubes with twist-lock caps
- Riser sections available for direct burial installations
- Can be used to treat water and wastewater flows



220 REPUBLIC STREET
NORWALK, OHIO, USA 44857-1196
TELEPHONE (419) 668-4471
FAX (419) 663-5440
www.norweco.com

SPECIFICATIONS

- 25¹/₂" length, 10¹/₂" width, 24" body height
- Constructed of high density, UV rated polyethylene
- Two one-piece chemical feed tubes, 22¹/₂" height
- Tiered flow deck with three separate flow channels
- Molded 4" inlet and outlet hubs
- Internal fall from inlet to outlet
- One safety/reinforcing strut
- Treatment capacity up to 1,500 gallons per day
- 24" riser sections available for deeper installation
- Ten year limited warranty



SYSTEM APPLICATIONS

Specifically manufactured for water or wastewater systems that treat less than 1,500 gallons per day, the Bio-Dynamic Model LF 1500 tablet feeder is designed to accommodate a peak flow factor of four. Applications for the LF 1500 include onsite wastewater treatment, potable water treatment, process water treatment and marine sanitation devices. Any 2⁵/₈" chemical tablet can be applied by the LF 1500, including Blue Crystal, Bio-Sanitizer, Bio-Neutralizer, Bio-Regeneration and Bio-Gem tablets. The chemical tablets or biological products will be reliably and consistently applied to the liquid, regardless of the flow pattern. The LF 1500 can be used for onsite wastewater treatment with septic systems, aerobic systems, sand filters, peat filters, mounds, lagoons, synthetic media filters and constructed wetlands.

DISTRIBUTED LOCALLY BY: