



Gasoline Engine Driven Self Priming Centrifugal Pump

Models 82D-GX160, 82D1-GX160,
82D2-GX160 and 82D52-GX160

Size 2" x 2"



8M

Total Head		Capacity of Pump in U.S. Gallons per Minute (GPM) at Continuous Performance				
P.S.I.	Feet					
41.6	96	30	30	30	30	30
39.0	90	50	50	50	50	50
34.7	80	67	82	82	82	82
30.3	70	75	97	108	108	108
26.0	60	79	104	124	139	139
21.7	50	81	107	130	144	144
17.3	40	83	108	134	152	156
13.0	30	84	109	135	157	164
8.7	20	85	110	136	160	170
Suction Lift		25'	20'	15'	10'	5'



PUMP SPECIFICATIONS

- Size:** 2" x 2" (51 mm x 51 mm) NPT - Female.
- Casing:** (82D and 82D1) Aluminum No. 356-T6 w/Gray Iron No. 30 Cutwater Insert. (82D2 and 82D52) Gray Iron No. 30. Maximum Operating Pressure 67 psi (462 kPa).*
- Open Type, Three Vane Impeller:** Gray Iron No. 30. Handles 5/8" (15,9 mm) Diameter Spherical Solids.
- Replaceable Wear Plate:** Carbon Steel M1026.
- Intermediate Bracket:** Gray Iron No. 30.
- Seal (82D and 82D2):** Double Grease-Lubricated with Spring Loaded Grease Cup. Sintered Bronze Stationary Seal Seats. Steel Rotating Faces. Maximum Temperature of Liquid Pumped, 110°F (43°C). Maximum Suction Pressure 10 psi (69 kPa)*.
- Seal (82D1 and 82D52):** Type 31, Mechanical, Self-Lubricated. Silicon Carbide Rotating and Stationary Faces. Fluorocarbon Elastomers (DuPont Viton® or Equivalent). Stainless Steel No. 316 Cage and Spring. Maximum Temperature of Liquid Pumped 160°F (71°C).*
- Seal Liner (82D and 82D2):** Copper Alloy C26000.
- Flap Valve:** Buna-N w/Nylon Reinforcement; Gray Iron No. 30.
- Suction Flange:** (82D and 82D1) Aluminum No. 356-T6. (82D2 and 82D52) -Gray Iron No. 30.
- Gaskets:** Vegetable Fiber.
- Hardware:** Standard Plated Steel.
- Standard Equipment:** 90° Ductile Iron Discharge Elbow. Rollover Base with Rubber Feet.
- Optional Equipment:** Two Wheel Truck Assembly with 10.00" x 2.75" (254 mm x 70 mm) Semi-Pneumatic Tires.

*Consult Factory for Applications Exceeding Maximum Pressure and/or Temperature Indicated.

WARNING!
Do not use in explosive atmosphere or for pumping volatile flammable liquids.

ENGINE SPECIFICATIONS

- Model:** Honda GX160.
- Type:** Single Cylinder, Four Cycle, Air Cooled, Overhead Valve, Gasoline Engine.
- Displacement:** 9.9 Cu. In. (163 cc).
- Carburetor:** Horizontal Type.
- Governor:** Mechanical.
- Lubrication:** Splash System.
- Air Cleaner:** Dual Element.
- Oil Reservoir:** 20 U.S. oz. (0,6 liter).
- Fuel Tank:** 3.8 U.S. Qts. (3,6 liter).
- Full Load Operating Time:** 3.7 Hrs.
- Starter:** Rope Rewind.

Standard Equipment: Muffler w/Guard. Manual Rotary Stop Switch. Manual Choke and Throttle Control w/Top Speed Limit. "Oil Alert"™ Low Oil Shut Down. Transistorized Magneto Ignition.

HONDA PUBLISHED PERFORMANCE:
Maximum Continuous 4.68 BHP (3,5 kW) @ 3600 RPM
Maximum Dynamic 5.5 BHP (4,1 kW) @ 3600 RPM



THE GORMAN-RUPP COMPANY • MANSFIELD, OHIO

GORMAN-RUPP OF CANADA LIMITED • ST. THOMAS, ONTARIO, CANADA
www.gormanrupp.com

Specifications Subject to Change Without Notice

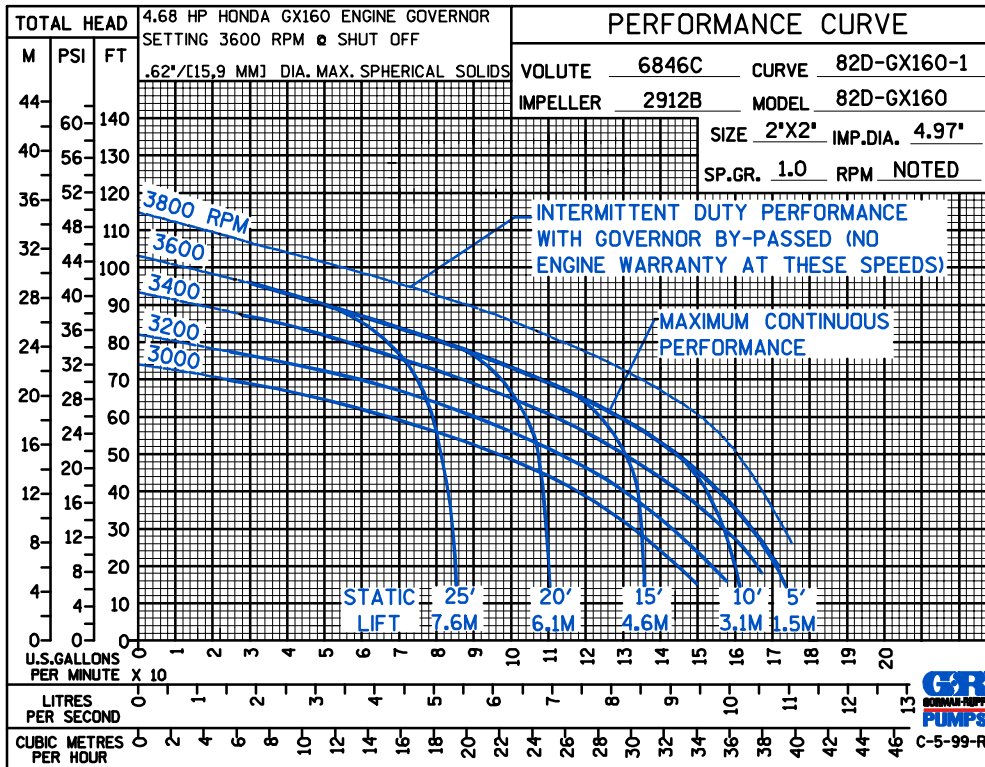
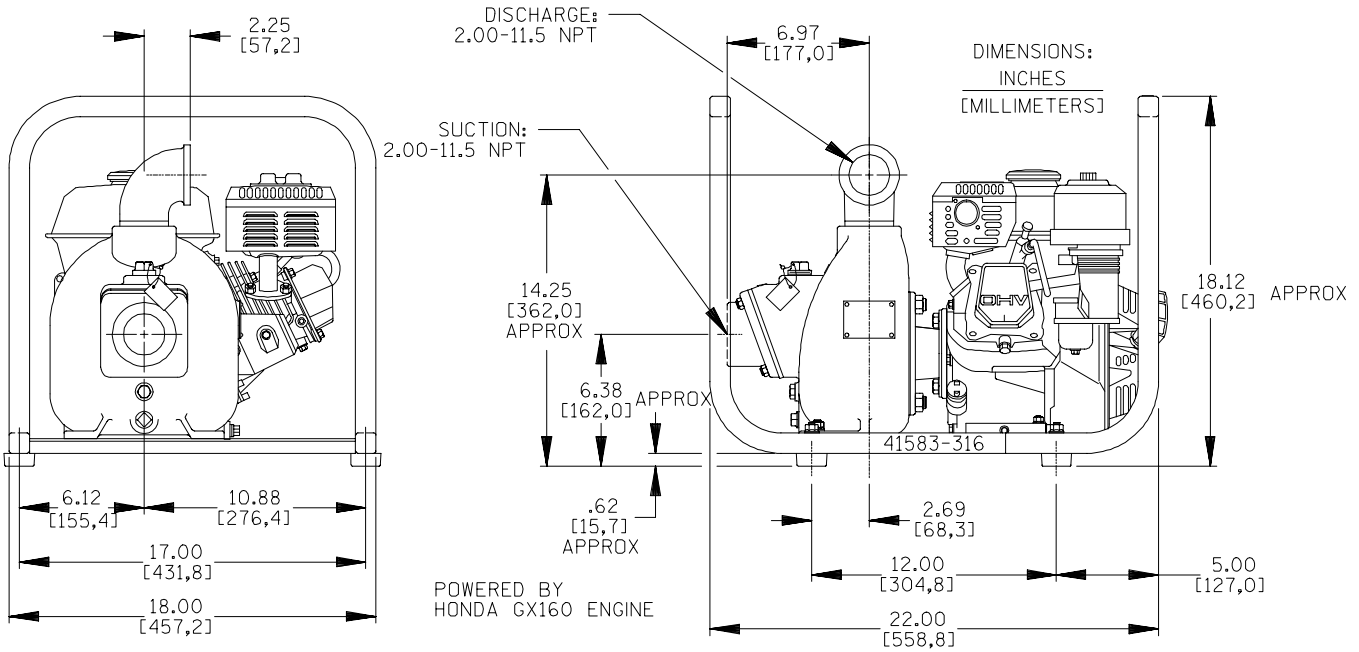
Printed in U.S.A.

Specification Data

SECTION 40, PAGE 470

APPROXIMATE
DIMENSIONS and WEIGHTS

MODEL	NET WEIGHT	SHIPPING WEIGHT	EXPORT CRATE SIZE
82D-160 & 82D1-160	86 LBS. (39 KG.)	92 LBS. (42 KG.)	4.6 CU. FT. (0,13 CU. M.)
82D2-160 & 82D52-160	97 LBS. (44 KG.)	103 LBS. (47 KG.)	4.6 CU. FT. (0,13 CU. M.)
WHEEL KIT ADD 25 LBS. (11,3 KG.); SHIPPING CRATE (SEPARATE) 3 CU. FT. (0,1 CU. M.)			



THE GORMAN-RUPP COMPANY • MANSFIELD, OHIO

GORMAN-RUPP OF CANADA LIMITED • ST. THOMAS, ONTARIO, CANADA

Specifications Subject to Change Without Notice

Printed in U.S.A.