

Please read and save this Repair Parts Manual. Read this manual and the General Operating Instructions carefully before attempting to assemble, install, operate or maintain the product described. Protect yourself and others by observing all safety information. The Safety Instructions are contained in the General Operating Instructions. Failure to comply with the safety instructions accompanying this product could result in personal injury and/or property damage! Retain instructions for future reference. AMT reserves the right to discontinue any model or change specifications at any time without incurring any obligation.

©2006 American Machine & Tool Co., Inc. of PA, A Subsidiary of The Gorman-Rupp Company, All Rights Reserved.

▲ WARNING Periodic maintenance and inspection is required on all pumps to insure proper operation. Unit must be clear of debris and sediment. Inspect for leaks and loose bolts. Failure to do so voids warranty.

Sewage/Trash Pumps

Refer to pump manual 1808-634-00 for General Operating and Safety Instructions.

Description

This sewage/trash pump is a heavy duty, centrifugal, motor driven, self-priming (to 20 ft. lift) unit. Pump is equipped with a Silicon Carbide mechanical seal, cast iron wear surfaces, and a stainless steel clog-resistant impeller. Units are used to handle water containing sewage, stones, sticks, mud and other solids: maximum diameter 1/2 the discharge NPT size. Handle liquids from 40° to 180° F (4° to 82° C) for use with nonflammable fluids compatible with pump component materials. All units come with built-in suction check valve to aid priming efficiency, and easily removable casing/cleanout cover and volute for quick debris clean out. An NPT threaded seal wash port is provided on Models 393A-95, 393B-95, 394A-95, 394B-95, 394C-95, 394D-95 and 399A-95. Units are powered by totally enclosed fan cooled (TEFC) motors, single or three phase power. Motor includes stainless steel shaft or stainless steel shaft sleeve.

Unpacking

Refer to Repair Parts Illustration and Repair Parts List to aid in identifying parts. Unpack and separate all pump components from container, making sure all parts are accounted for.

Package should contain:

1. Pump and motor completely assembled.
2. Suction strainer.
3. Specifications Information & Repair Parts Manual.
4. General Operating Instructions & Maintenance Manual.

Maintenance

Note: For information pertaining to the motor and motor parts, consult the motor manual or contact the nearest authorized service representative or the manufacturer.

▲ WARNING *Make certain that the unit is disconnected from the power source before attempting to service or remove any component.*

MECHANICAL SEAL REPLACEMENT

Should the mechanical seal, which consists of seal seat (Ref. No. 6), seal cartridge (Ref. No. 5), and shaft sleeve (Ref. No. 19, if applicable) require replacement, proceed as follows and refer to Figures 1 and 2. The seal should also be replaced if the adapter (Ref. No. 8) is to be replaced. To identify seal failure, see Troubleshooting Chart.

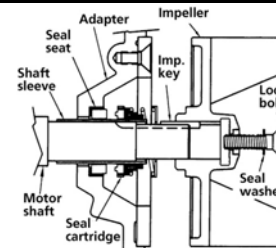
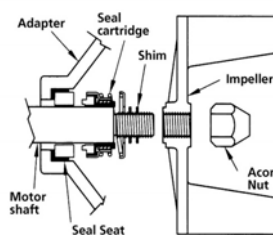


Figure 1

Figure 2

NOTE: Always replace the seal seat, seal cartridge, and shaft sleeve to ensure proper mating of mechanical seal components!

1. Unthread bolts (Ref. No. 9) and remove casing (Ref. No. 1) from adapter.
2. Unthread screw(s) (Ref. No. 11) and remove volute from adapter.
3. 316A-95 and 316B-95 (Figure 1): Remove impeller lock nut (Ref. No. 18). Unscrew impeller (Ref. No. 3) from the motor shaft. Use a rubber mallet or soft block of wood to loosen impeller. Turn it counter-clockwise. Remove the impeller shim (Ref. No. 4) and seal cartridge (Ref. No. 5).
4. 393A-95, 393B-95, 394A-95, 394B-95, 394C-95, 394D-95, and 399A-95 (Figure 2): Using an Allen wrench, remove the impeller lock bolt (Ref. No. 18) and O-ring (Ref. No. 26). Slide impeller off motor shaft. Remove the impeller shim (Ref. No. 4), shaft sleeve (Ref. No. 19), and seal cartridge (Ref. No. 5).

IMPORTANT: Care should be taken to insure that the same number of impeller shims (Ref. No. 4) are replaced behind the impeller as were removed. These impeller shims are located directly behind impeller. These shims as well as the impeller key (Ref. No. 21) become loose as the impeller is removed.

5. Unthread cap screws (Ref. No. 13) and remove adapter from motor.
6. Push seal seat (Ref. No. 6) from the adapter recess with a screwdriver.
7. Clean adapter recess before inserting a new seal seat.

▲ CAUTION *The precision lapped faces on the mechanical seal are easily damaged. Handle your replacement seal carefully.*

8. Carefully wipe the polished surface of the new seal seat with a clean cloth.
9. Wet rubber portion of the seal seat with a light coating of soapy water.

(continued on page 8)

For Repair Parts, contact dealer where pump was purchased.

Please provide following information:

- Model number
- Serial number (if any)
- Part description and number as shown in parts list

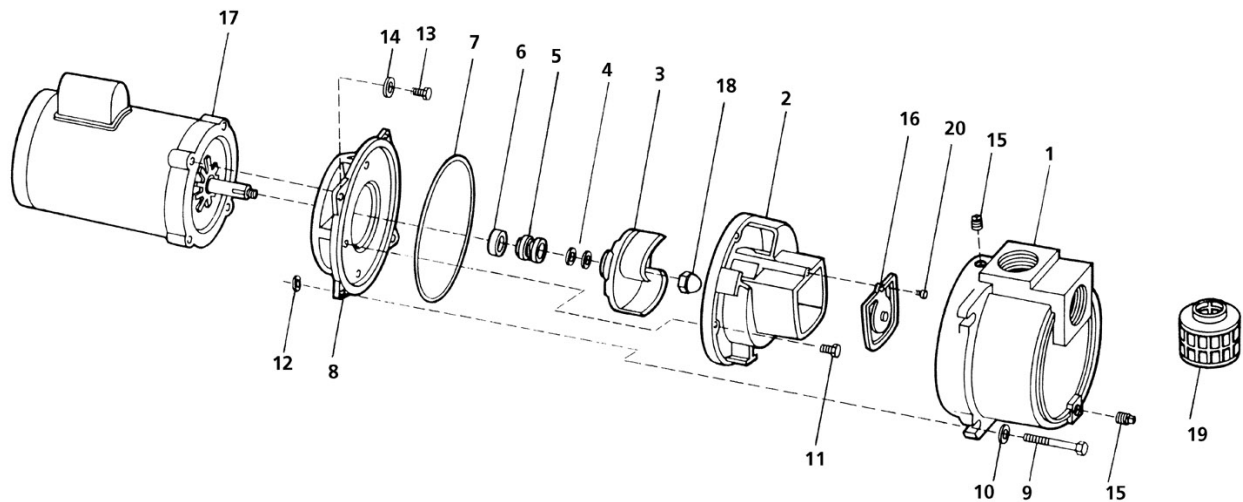


Figure 3 - Repair Parts Illustration

Repair Parts List

Reference Number	Description	Part Numbers for Models:		Quantity
		316A-95	316B-95	
1	Casing	2111-001-02	2111-001-02	1
2	Volute	3163-150-09	3163-150-09	1
3	Impeller	3163-011-01	3163-011-01	1
4	Impeller shim set package	1806-044-90	1806-044-90	1
5,6	†Seal assembly, Viton and Silicon Carbide	1640-165-00	1640-165-00	1
7	O-ring gasket #263 Buna-N	1610-000-00	1610-000-00	1
8	Adapter	1608-011-01	1608-011-01	1
9	3/8"-16 UNC x 2-3/4" hex head bolt	*	*	4
10	3/8" flat washer	*	*	4
11	#10-24 UNC x 7/8" S.S. soc hd cap screw	*	*	1
12	3/8"-16 UNC hex nut	*	*	4
13	3/8"-16 UNC x 1" hex hd cap screw	*	*	4
14	3/8" split lock washer	*	*	4
15	1/2" NPT pipe plug	*	*	2
16	Flapper valve assembly, Neoprene	1609-002-00	1609-002-00	1
17	‡Motor	1626-072-00	1626-071-00	1
18	Impeller lock nut	1784-001-00	1784-001-00	1
19	Suction strainer	1679-001-00	1679-001-00	1
20	#10-24 UNC x 3/8" flat hd machine screw	*	*	1

(* Standard hardware item, available locally.

(†) Seal cartridge and seat available as set only.

(‡) Foot package 1626-040-00 required on these motors.

For Repair Parts, contact dealer where pump was purchased.

Please provide following information:

- Model number
- Serial number (if any)
- Part description and number as shown in parts list

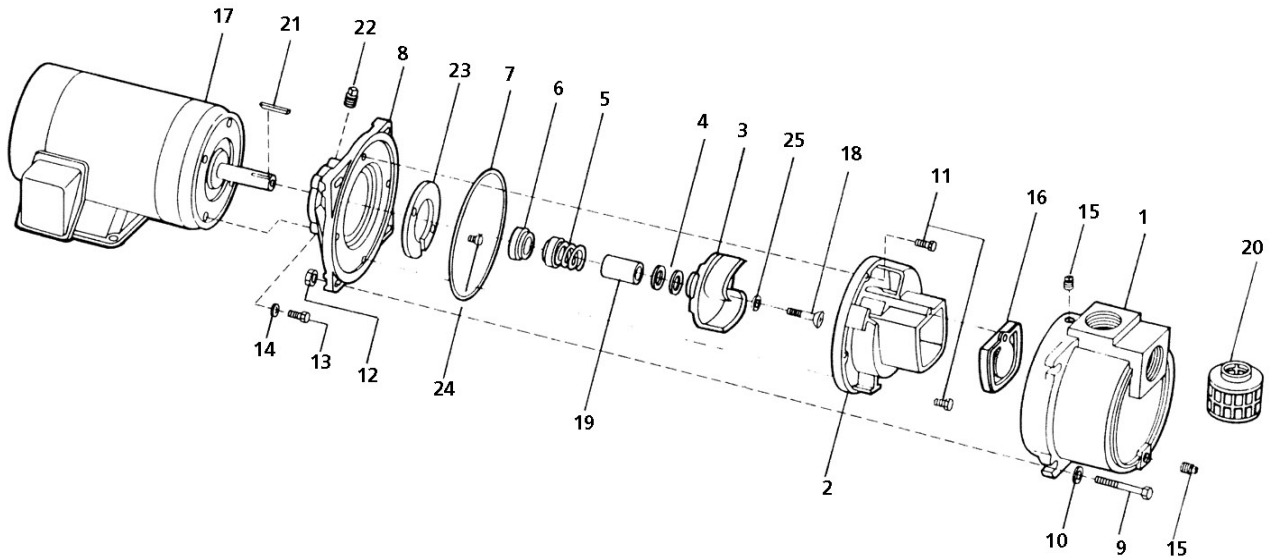


Figure 4 - Repair Parts Illustration

Repair Parts List

Ref. Number	Description	Part Numbers for Models:		Quantity
		393A-95	393B-95	
1	Casing	2112-001-02	2112-001-02	1
2	Volute	2182-002-01	2182-002-01	1
3	Impeller	3935-011-01	3935-011-01	1
4	Impeller shim set package	1664-000-90	1664-000-90	1
5 & 6	†Seal assembly, Viton and Silicon Carbide	1640-167-90	1640-167-90	1
7	O-ring gasket #268, Buna N	2186-000-00	2186-000-00	1
8	Adapter	3655-030-01	3655-030-01	1
9	3/8"-16 UNC x 3-1/2" hex hd bolt	*	*	4
10	3/8" flat washer	*	*	12
11	#10-24 UNC x 7/8" S.S. slotted rnd hd mach screw	*	*	2
12	3/8"-16 UNC hex nut	*	*	4
13	3/8"-16 UNC x 1-1/4" hex hd cap screw	*	*	4
14	3/8" split lock washer	*	*	4
15	1/2" NPT pipe plug	*	*	2
16	Flapper valve, Buna N	1609-002-00	1609-002-00	1
17	Motor	1626-044-00	1626-078-00	1
18	3/8"-16 UNC x 1-1/4" S.S. countersunk screw (Impeller lock bolt)	*	*	1
19	Shaft sleeve	1472-000-00	1472-000-00	1
20	Suction strainer	1679-001-00	1679-001-00	1
21	Impeller key	1471-030-00	1471-030-00	1
22	1/8" NPT pipe plug	1768-001-00	1768-001-00	1
23	Wearplate	3655-032-01	3655-032-01	1
24	S.S. flat head soc screw	1741-000-00	1741-000-00	2
25	O-ring #205 Buna-N	3150-301-00	3150-301-00	1

(*) Standard hardware item, available locally.

(†) Seal cartridge and seat available as set only.

NOTE: When replacing a seal assembly, a new #205 O-ring (Part No. 3150-301-00) should also be replaced.

For Repair Parts, contact dealer where pump was purchased.

Please provide following information:

- Model number
- Serial number (if any)
- Part description and number as shown in parts list

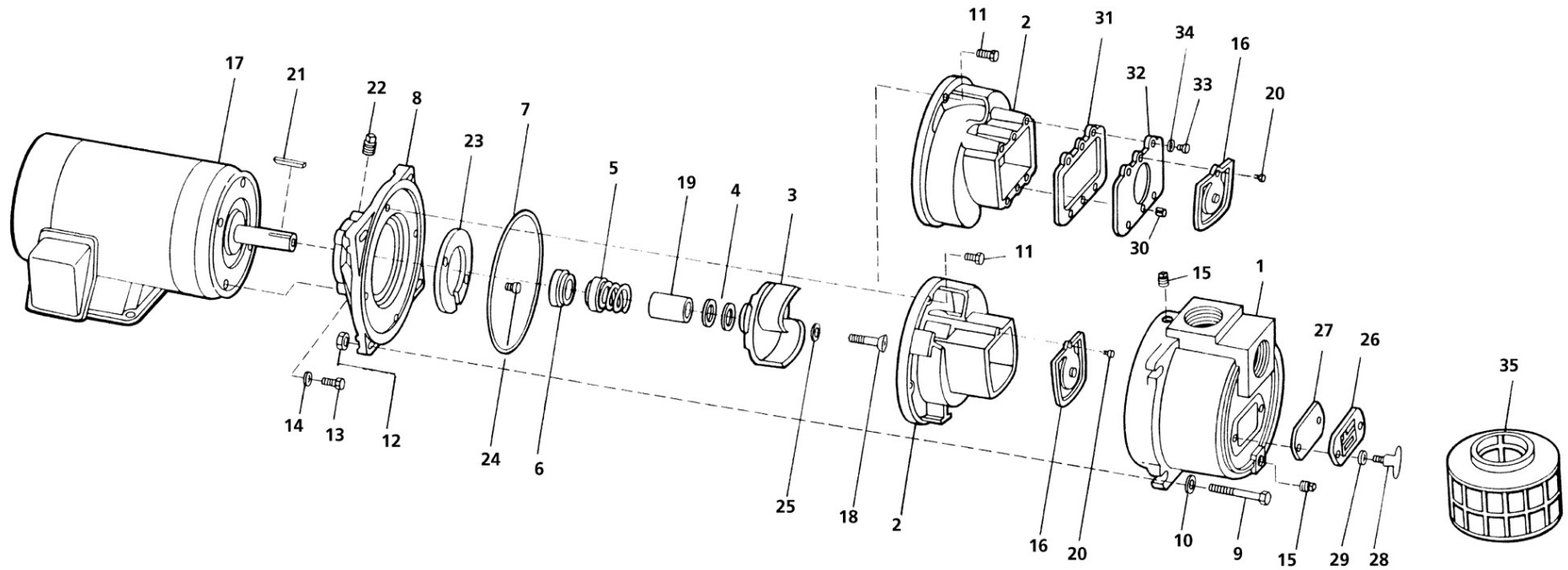


Figure 5 - Repair Parts Illustration

Repair Parts List

Ref. No.	Description	Part Numbers for Models			Ref. No.	Description	Part Numbers for Models		
		394A-95 394B-95	394C-95 394D-95	Qty.			394A-95 394B-95	394C-95 394D-95	Qty.
1	Casing	2113-003-01	2113-003-01	1	18	3/8"-16 UNC x 1-1/4" S.S.	*	*	1
2	Volute	2184-002-01	1990-002-02	1		countersunk screw (impeller lock bolt)			
3	Impeller	3945-011-01	3945-010-02	1	19	Shaft sleeve	1472-000-00	1472-000-00	1
4	Impeller shim set package	1664-000-90	1664-000-90	1	20	#10-24 UNC x 3/8" S.S. flat head Mach screw	*	*	1
5,6	†Seal assembly, Viton and silicon carbide	1640-167-90	1640-167-90	1	21	Impeller key	1471-030-00	1471-030-00	1
7	O-ring gasket #276, Buna N	2185-000-00	2185-000-00	1	22	1/8" NPT pipe plug	*	*	1
8	Adapter	1990-031-01	1990-031-02	1	23	Wearplate	2182-004-01	2182-004-01	1
9	1/2"-13 UNC x 4-1/2" hex hd bolt	*	*	4	24	5/16"-18 UNC x 1/2" S.S. flat hd soc scr	1741-000-00	1741-000-00	2
10	1/2" flat washer	*	*	4	25	O-ring #205, Buna N	3150-301-00	3150-301-00	1
11	1/4"-20 UNC x 7/8" S.S. hex hd cap screw	*	*	2	26	Cleanout cover plate	2115-002-01	2115-002-01	1
12	1/2"-13 UNC hex nut	*	*	4	27	Cleanout gasket, Neoprene	2115-003-00	2115-003-00	1
13	3/8"-16 UNC x 1-1/4" hex head cap screw	*(394A-95)	*	4	28	Cleanout handle	1601-000-00	1601-000-00	2
	1/2"-13 UNC x 1-1/2" hex head cap screw	*(394B-95)	*	4	29	3/8" flat washer	*	*	2
14	3/8" split lock washer	*(394A-95)	*	4	30	1/8" dia x 3/8" lg spring pin	-	*	2
	1/2" split lock washer	*(394B-95)	*	4	31	Volute adapter gasket, Buna N	-	1990-300-00	1
15	3/4" NPT pipe plug	*	*	2	32	Volute suction adapter	-	1990-151-01	1
16	Flapper valve, Neoprene	3590-070-90	3590-070-90	1	33	#10-24 UNC x 1/2" S.S. hex head cap screw	-	*	4
17	Motor (394A-95) 7.5 HP 3 Ph	1626-045-00	-	1	34	S.S. split lock washer #10	-	*	4
	Motor (394B-95) 7.5 HP 1 Ph	1626-079-00	-	1	35	Suction strainer	1681-000-00	1681-000-00	1
	Motor (394C-95) 10 HP 3 Ph	-	1626-081-00	1					
	Motor (394D-95) 10 HP 1 PH	-	1626-080-00	1					

(*) Standard hardware item, available locally.

(†) Seal cartridge and seat available as set only.

NOTE: When replacing a seal assembly, a new #205 O-ring (Part No. 3150-301-00) should also be replaced.

For Repair Parts, contact dealer where pump was purchased.

- Please provide following information:
- Model number
 - Serial number (if any)
 - Part description and number as shown in parts list

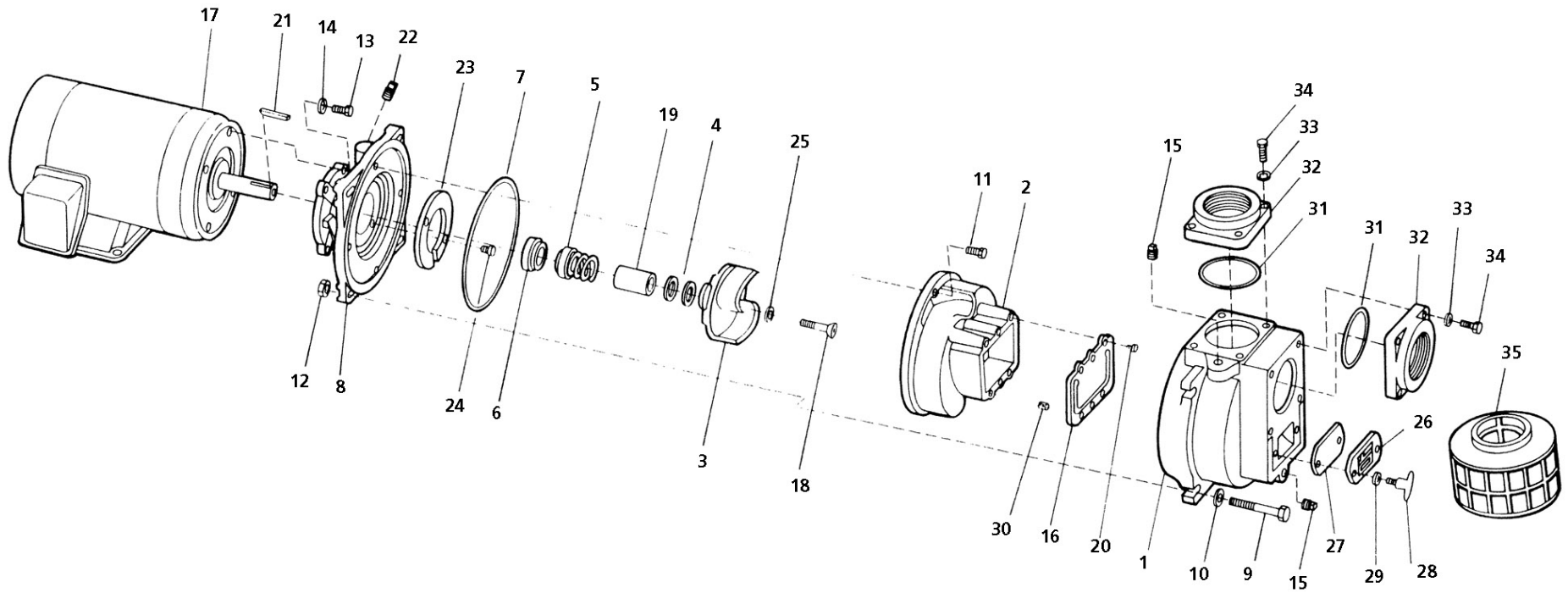


Figure 6 - Repair Parts Illustration

Repair Parts List

No.	Description	399A-95		Ref. No.	Description	Part Numbers for Models	
		399A-95	Qty.			399A-95	Qty.
1	Casing	2116-002-01	1	20	#10-24 UNC x 3/8" S.S. flat hd mach screw	*	2
2	Volute	1990-002-01	1	21	Impeller key	1471-030-00	1
3	Impeller	3945-010-03	1	22	1/8" NPT pipe plug	*	1
4	Impeller shim set package	1664-000-90	1	23	Wearplate	2182-004-01	1
5,6	†Seal assembly, Viton and Silicon carbide	1640-167-90	1	24	5/16"-18 UNC x 1/2" S.S. flat hd soc scr	1741-000-00	2
7	O-ring gasket #276, Buna-N	2185-000-00	1	25	O-ring #205, Buna-N	3150-301-00	1
8	Adapter	1990-031-02	1	26	Cleanout cover	2115-002-01	1
9	1/2"-13 UNC x 4-1/2" hex hd bolt	*	4	27	Cleanout gasket, Neoprene	2115-003-00	1
10	1/2" flat washer	*	4	28	Cleanout handle	1601-000-00	2
11	1/4"-20 UNC x 7/8" S.S. hex hd cap screw	*	2	29	3/8" flat washer	*	2
12	1/2"-13 UNC hex nut	*	4	30	1/8" dia x 3/8" lg spring pin	*	4
13	1/2"-13 UNC x 1-1/2" hex hd cap scr	*	4	31	O-ring #251, Buna-N	1990-008-00	2
14	1/2" split lock washer	*	4	32	Connection flange	1990-004-01	2
15	3/4" pipe plug	*	2	33	7/16" split lock washer	*	8
16	Flapper valve, Buna N	1696-033-90	1	34	7/16"-14 x 1-1/2" hex hd cap screw	*	8
17	Motor	1626-047-00	1	35	Suction strainer	1681-001-00	1
18	3/8"-16 UNC x 1-1/4" S.S. countersink scr (impeller lock bolt)	*	1				
19	Shaft sleeve	1472-000-00	1				

(*) Standard hardware item, available locally.

(†) Seal cartridge and seat available as set only.

NOTE: When replacing a seal assembly, a new #205 O-ring (Part No. 3150-301-00) should also be replaced.

10. While wearing clean gloves or using a clean rag, press seal seat squarely into adapter recess. Avoid scratching the polished surface. If seal seat will not position properly, place a cardboard washer over the polished surface and use a piece of pipe to press in, firmly but gently.
 11. After seal seat is in place, dispose of cardboard washer. Check that seat is clean and has not been marred.
 12. Using a clean cloth, wipe the shaft and make certain that it is perfectly clean.
 13. Secure the adapter on the motor mounting surface with fasteners.
 14. Wet the inside rubber portion of the new seal cartridge with a light coating of soapy water. 316A-95 and 316B-95: Slide cartridge onto motor shaft until cartridge meets seal seat. 393A-95, 393B-95, 394A-95, 394B-95, 394C-95, 394D-95 and 399A-95: Slide cartridge onto shaft sleeve. Slide shaft sleeve with seal cartridge onto motor shaft until cartridge meets seal seat. Reinstall impeller key.
 15. Reinstall any impeller shims which have been removed. (See "Shim Adjustment" section).
 16. 316A-95 and 316B-95: Screw impeller back in place, tightening until it is seated against shims and shaft shoulder. 393A-95, 393B-95, 394A-95, 394B-95, 394C-95, 394D-95 and 399A-95: Replace impeller key, impeller, retaining washer, o-ring, impeller seal washer, and impeller lock bolt. Tighten lock bolt until impeller is seated against shims and shaft sleeve.
 17. Remount volute with fasteners.
 18. Refer to section entitled Shim Adjustment at this time if shaft sleeve or any other parts listed have been replaced.
 19. Inspect position of flapper valve to ensure proper movement and sealing.
 20. Replace o-ring seal on volute rabbet.
- NOTE:** Always inspect o-ring seals. Replace when cracked or worn. Wet o-ring with soapy water for ease of assembly.
21. Remount casing.
 22. Remount any other parts and reconnect power.

SHIM ADJUSTMENT

When installing a replacement impeller, motor, shaft sleeve, adapter, or volute, it may be necessary to adjust the number of impeller shims (Ref. No. 4) to insure proper running clearance between impeller and the volute wear surface. Proceed as follows:

NOTE: Proper running clearance is 0.010".

1. For impeller replacement, add one (1) shim in addition to those removed originally.
2. For motor replacement, add one (1) shim in addition to the shims removed during disassembly.
3. Reassemble the pump as described in steps 15, 16, and 17. (See "Mechanical Seal Replacement" section).

IMPORTANT: Check the shaft to make sure it is turning freely (rotate the impeller by the impeller lock bolt with an Allen wrench or by the acorn nut with a socket wrench). If it turns freely, check to insure that the volute and adapter are fitted metal-to-metal where they meet on the outside. If they are not metal-to-metal, tighten fasteners and recheck the shaft for free turning. Tighten carefully, turning the shaft while tightening so that the motor bearings are not damaged in the event that too many shims were installed. If shaft seizes before fasteners are completely tight, disassemble the pump and remove one (1) shim and repeat reassembly.

NOTE: When adding or removing shims it is best to proceed with a 0.010" increment each time. If motor shaft does turn freely, add shims until it does strike, then remove a 0.010"

shim. This will insure maximum performance.

IMPELLER, WEARPLATE, AND VOLUTE REPLACEMENT

Impeller (Ref. No. 3), wearplate (Ref. No. 23) and volute (Ref. No. 2) are subject to wear only by abrasive sand or sediment laden liquids. If badly worn, all these parts can be replaced easily and the pump thus restored to full efficiency.

NOTE: When the clearance between the impeller and the volute exceeds 1/16" at the face of the impeller or 1/8" on the outside diameter of the impeller, it may be necessary to take corrective action. The increased clearance can cause lengthened priming times and reduce pumping capacity. If both the priming and capacity of your unit are satisfactory for your application, it is recommended that no corrective maintenance be performed regardless of what clearances on your unit may have developed, since the increased clearances in themselves are not generally harmful to your pump.

Normally, new pump clearances can be restored by simply shimming behind the impeller. (Add impeller shims (Ref. No. 4). If the impeller is badly worn, it is recommended that the impeller be replaced. This is usually all that is required since only on unusually abrasive service does the cast iron wearplate and volute show deterioration. Occasionally a stone or hard object might get caught in the impeller and cause damage to the volute. In these cases, follow the instructions below for replacement and refer to the associated Repair Parts Illustration.

1. Disassemble pump for access as described in MECHANICAL SEAL REPLACEMENT, steps 1, 2, 3 and 4.
2. Replace parts as necessary.

NOTE: When replacing volute, attach flapper valve to new volute.

3. To replace rear wearplate (Ref. No. 23), remove impeller (Ref. No. 3), and fasteners (Ref. No. 24).

NOTE: Before installing new parts, clean all mating surfaces thoroughly.

CLEANING

These units are designed with a removable volute and suction cleanout cover (394A-95, 394B-95, 394C-95, 394D-95 and 399A-95) enabling the pump to be cleaned or unclogged with ease. Remove the suction cleanout cover plate (Ref. No. 26) and gasket and/or remove the casing and volute. Remove any debris found inside the unit, reassemble as described in MECHANICAL SEAL REPLACEMENT steps 17 to 22.

NOTE: When replacing cleanout cover plate, carefully wipe clean all surfaces on which the gasket has contact. Also, make sure the gasket is in position.

FLAPPER VALVE CLEANING

If debris clogging the flapper valve becomes a constant problem, the flapper area can be cut from the perimeter gasket area and removed from the pump. It is important that the perimeter of the flapper valve remains to seal the inlet area of the casing/volute from the discharge area.

NOTE: Priming efficiency will be reduced if flapper portion is removed.

NOTE: Do not remove entire flapper valve. Perimeter of valve must remain; remove only the flapper area. The pump will not prime and performance will be affected if entire flapper valve is removed.